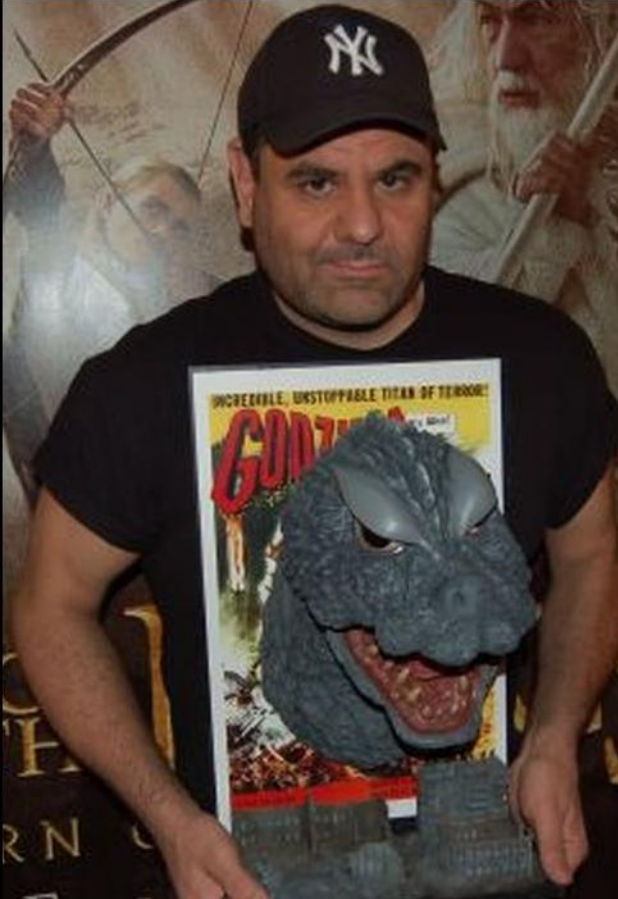


KEN KONG VS GODZILLA

Kenny Caruso is an "old school" horror film fan from Hackensack, New Jersey. An avid fan of the classics, Kenny is also a serious Godzilla fan and an accomplished GK artist. Whether scratch-building a cool base for his Bram Stoker's Dracula diorama or pulling together the necessary parts for a diorama for Black Heart's Godzilla, Kenny is making an impression on fans of garage kits with award-winning garage kit diorama work. We asked Kenny to do something unique with our Godzilla wall-hanger and to do an article about the build-up process ...and he blew it up! This is the first diorama we've seen for one of our large scale wall-hangers. Thanks, Kenny. You da man!



Godzilla....."The King of the Monsters".....with his distinctive roar...and plodding destruction. And who could ever forget that radioactive fire breath? He first appeared in Ishiro Honda's 1954 film, *Gojira*. In Japanese, the words "gorilla" and "whale" combine to make that name and he was born as a result of man's tampering with nuclear weapons, maybe to show the world what could happen if we, the human race, continued to tamper with things we shouldn't.

There have been many sequels to the original film starring the big fella. Some were serious and some not so serious but we were sure to have a blast watching him on screen. Among Godzilla fans, there is always the debate about which of the Godzilla was the best. With this 1964 version of the monster, Black Heart has brought another winner to the garage kit world. Sculpted masterfully by Bill Wieger, this large scale wall hanger is everything a Godzilla or Kaiju fan could want.

Black Heart unveiled this beauty at JerseyFest 2011 and I knew then and there that they had a sure fire winner on their hands. The castings are top notch with hardly any clean up at all. After seeing it, the first thing that came to my mind was that I wanted to do something different with this piece.

I remember seeing a picture of a kit with a huge, stylized Godzilla with a city superimposed at his feet. With that in mind, I explained to George Stephenson, Black Heart's owner, what I had in mind, i.e., "sort of a 3-D art poster type of thing, the kind that if you walked into a movie theatre lobby and saw it you would be like, 'WOW! I have to see this movie.'" I was pumped. George, on the other hand, pretended to like the idea and said something like "Whatever" and told me to run with it.



So, here it is. And, please excuse some of my photos here as they are a little fuzzy. *Hey, I'm a modeler not a photographer!!*



Painting Big G was the easiest part. First, after pinning the mouth to the head, I used some Ave's epoxy to fill in the little area around the throat and then textured that with tin foil. Next, I primed him a dark charcoal gray using Com-art's 60% gray as the base coat. Then 30 % on the raised areas and finally 10 % gray. I then mixed up some black and white for the different shades of gray I wanted and dry brushed Everywhere I felt it should go. Once I was happy with that. I made a wash of raw umber and lamp Post black and repeatedly added the wash until it really looked the way I wanted. Lastly misted very lightly some transparent Paynes gray. Please note to always seal your kit with Dullcoat before moving on to the next step.



For the eyes, I lightly sprayed a few even coats of Freestyle Jet black and sealed it with a couple of coats of Testor's DullCote.



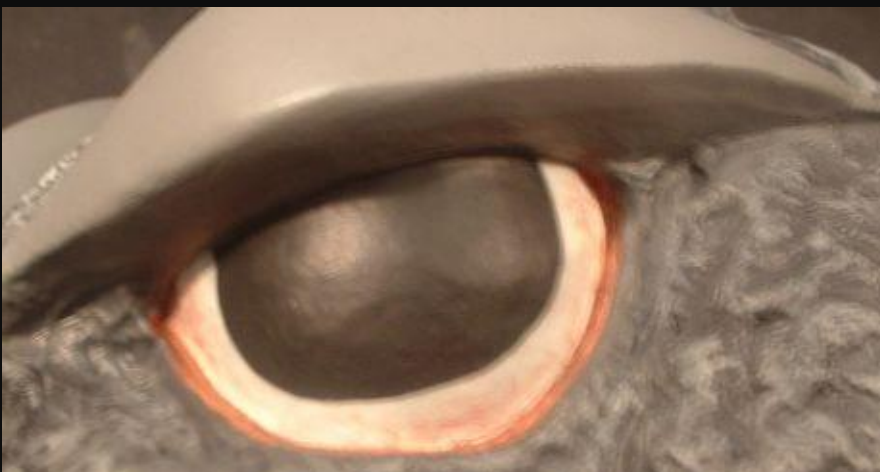
I took blue masking tape, made sure it was only adhesive enough to stick to the base coat and when lifted off didn't leave any residual glue. I cut and shaped the eye with the tape and laid it down over where it best fit.



I then laid down a very light mist of Titanium white, building the color slowly and making sure that it was even and covered the whole eye. Sorry this one is a little fuzzy... but you get the idea.

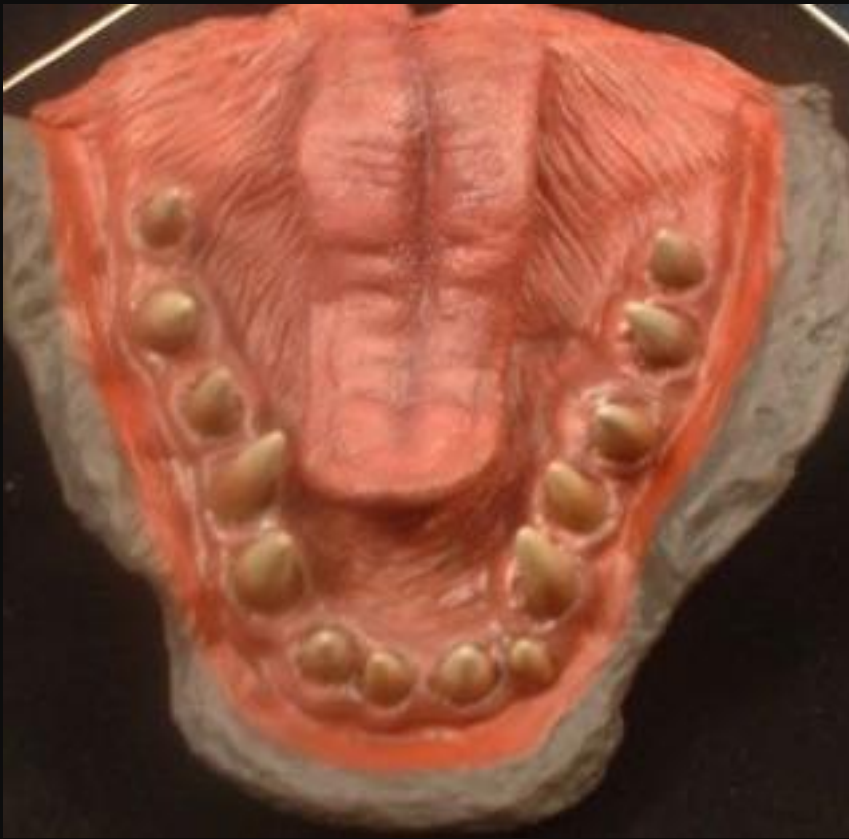


After the paint was completely dry, I VERY carefully peeled off the tape. I cleaned up the edges where needed and made sure everything was even. Last, I sealed with Dullcote.



I finished the eyes with a basecoat of true red for the lining of the eye, then toned it down with a watercolor wash of rose red and sealed it after each step. I made a wash of pale flesh and very lightly went over the red which toned it down a bit more but also gave it that pinkish-red fleshy color.

Finally, I took the same rose colored wash and very lightly added some veins and a little more a reddish color in the both front and back corners. Then, I sealed my work with DullCote and the eyes are done. In the movie, his eyes don't have any veins but I figured it would look cooler and meaner with a little bit of a bloodshot effect. And there you have the finished eyes.



For Godzilla's mouth, I started with a base coat of Alizarin Crimson and True Red. I then proceeded to work in dry brushing a Pale Flesh and Natural Flesh mix over all the raised areas of the mouth. I kept that up until I was happy with it. For the tongue, I wanted a more pinkish fleshy look and wanted it to stand out from the bottom of the mouth. I painted it the same way but went lighter in the raised areas with my pink/pale flesh mix. Then I sealed the whole mouth. Next were washes of Burnt Umber and Lamp Post Black. After getting the desired effect, I lightly misted Transparent Dusty Pink which I concentrated more on the recessed areas of the tongue



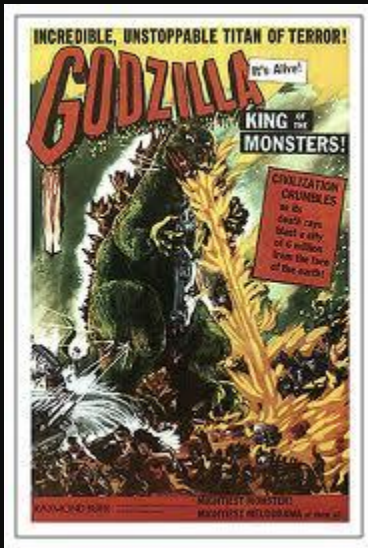
I painted the teeth with a Sandstone/Off White mix. Then I used Red Iron Oxide Dark Shade pastel on the base of the teeth. I feathered that in and then went with a lighter shade of red iron oxide shade. I finished it off with a raw umber shade. I made sure I feathered all the colors in so that they blended and looked more "natural".

In the movie his teeth are just white but I decided this would look much more realistic and cooler than just painting them plain white. I did the same with the roof of the mouth.

To finish, I went back and "tightened" up all around the mouth areas where the gums meet the gray flesh.

Now on to the base for this beast.

Since seeing this kit at Jerseyfest 2011, I have wanted this to be different than any other finished Black Heart wall-hanger I have seen. So, I used a 9 by 11-1/2 inches piece of laminated plywood for the base floor and another piece measuring 9 x 18 inches for the upright part of the base.



I wanted a poster to be the back drop on which G's head would rest. And, after deciding on the Godzilla poster that I thought would be perfect along with the base, the remaining components were going to be the destroyed buildings and the wooden base on which the wall-hanger and the diorama would be mounted and secured.



I was able to get the buildings from JR Miniatures and they were perfect. I smashed them up a bit more and then primed and painted the base black. I glued the poster down so it was nice and smooth and planned how I wanted the buildings situated on the base. I primed and painted them with different grays and browns along with a very light shade of Grey on the windows. I glued them down to the base and added some Aves epoxy which I textured with tinfoil.

Finally, I want to thank the folks at Black Heart for letting me paint this beautiful kit and thanks to my crew (Tommy, Saul, Dave T, Dave Booney Diaz, and Matt) for their support.





INCREDIBLE, UNS... TERROR!

GOD

